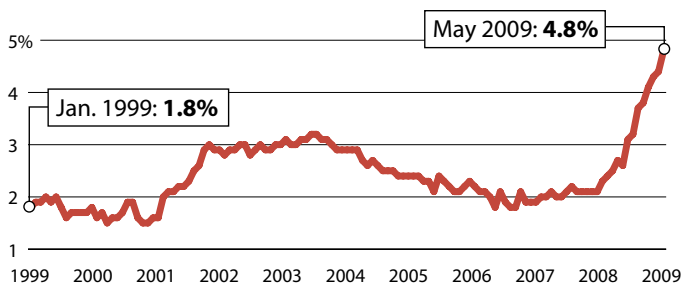


Unemployment among college graduates

The unemployment rate for those with a bachelor's degree or higher is in its ninth straight month of increases, and is more than double the rate of a year ago. Although the rate is about half the level for the general population, employment professionals say its unusual to see this many college grads out of work during a recession.

25 YEARS AND OVER



Source: Bureau of Labor Statistics

ROCKFORD REGISTER STAR